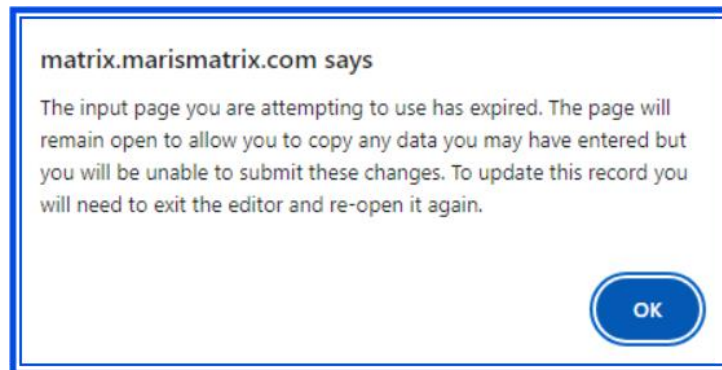


MARIS

Troubleshooting Steps for Outage: 202410-618513

If you are receiving the following notification, use the troubleshooting steps below:



Troubleshooting Steps

When uploading photos:

- Type the MLS number into the speedbar. Usually, this error happens erroneously when uploading photos and they tend to be uploaded anyway.

On the input screen or when uploading supplements:

- Make sure that only one tab of Matrix is open per browser. If more than one is open, close out of the extra tab and refresh your page.
- Additionally, you will need to clear your cache ([click here for instruction for chrome and safari](#))
- Lastly, input or upload again.

If you continue to receive this error reach out to MARIS tech support at 314-984-9111 x 1