



**On-demand education.
Available 24 hours a day.**

Did you know that [MARIS](#) provides regular educational opportunities to help you stay up to date and informed about the products you use every day? Learning opportunities are available to you live online as well as on-demand by visiting the "Learn" page of our website, which you can access 24 hours a day, 7 days a week. Below are some of the upcoming webinars we will be providing in the month of August. While our on-site education is currently limited to a virtual format, you can always request a training for your office [via our website](#).



NEWS FROM THE BLOG

WHAT TO KNOW ABOUT MLS DATA USE & ABUSE

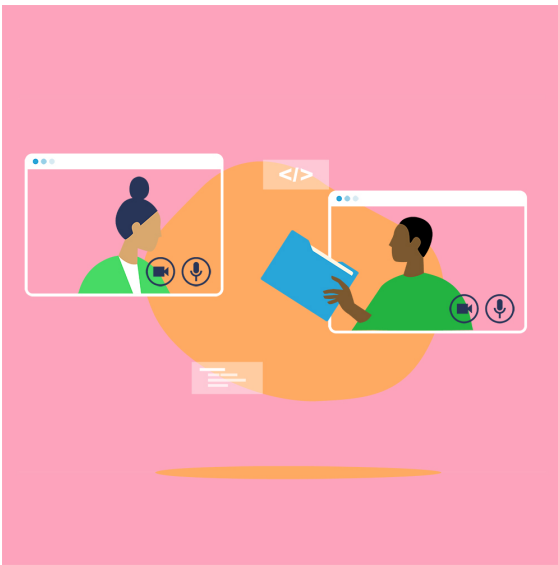


Maintaining and Safeguarding Your MLS Data

An MLS isn't just about bedrooms and baths! MARIS spends a significant amount of time maintaining and safeguarding your MLS data. We encourage you to review the [MARIS rule set](#) but also want to share a few examples of how brokers and agents violate their MARIS Participation Agreement...[Read More](#).

Virtual Flyers from RatePlug

RatePlug has been hard at work developing their new virtual flyer option, which gives you the ability to continue offering your clients a one-to-one experience while maintaining the social distancing that you and your clients may still be desiring...[Read More](#).



DID YOU KNOW?

ShowingTime: Mobile App FAQ

Having the ability to manage showings and feedback on the go is imperative when it comes to maintaining a steady stream of communication between you and your clients, and the ShowingTime mobile app gives you that ability no matter where you are. Still, you might have a few questions about the app, and MARIS wants to make sure you're fully equipped with all the answers. So, here are a couple of Frequently Asked Questions:

How do I share feedback from a showing with my sellers?

Sharing feedback with your sellers comes in 2 forms:

- 1) You can hold it for review, or
- 2) you can have it published automatically

The seller won't be notified if you hold feedback for review unless you publish it. For more information on setting up both of these options, click [HERE](#).

Do you have any recommendations on how to configure listings?

Recommendations can differ from home to home depending on the flexibility of your sellers. They will vary, for example, if you are working with sellers of a vacant home as opposed to less flexible sellers occupying the property. Thankfully, ShowingTime has built a [help site](#) offering listing configuration settings recommendations, which we encourage you to visit for more in-depth recommendations!



WEBINARS

MARIS Orientation Online

Discover and identify the advantages of your MARIS membership.

August 4th
2:00 - 3:00 p.m.

[Register!](#)

Discover Remine Pro

Designed by agents for agents, Remine connects you with your clients and streamlines your workflow — all within one mobile-friendly platform.

August 11th
10:00 - 11:00 a.m.

[Register!](#)

Rediscover MATRIX

This webinar will give a deeper dive into the Matrix system with tips and tricks on searching, client collaboration, and listing management.

August 18th
10:00 - 11:00 a.m.

[Register!](#)

MarketStats

Easily create statistics, define your market area with predetermined or self created areas, share stats to social media or embed in a blog/website, and more!

August 25th
10:00 - 10:30 a.m.

[Register!](#)

MARIS Product Overview

Are you utilizing all the products included in your Membership? Here, we'll go over our product offerings with tips & tricks for each.

August 25th
10:30 - 11:00 a.m.

[Register!](#)

MARIS Video Library



Don't forget that MARIS offers on-demand education, available to you 24/7.

[Learn More!](#)

Empowered. Inspired. Engaged.



Copyright © 2020 MARIS, All right reserved

You are receiving this email because you are an Active MARIS Member.

Our mailing address is:

MARIS

1716 Hidden Creek Ct, Suite 150

St. Louis, MO . 63131, US

Want to change how you receive these emails? You can [update your preferences here](#) or [Unsubscribe](#).